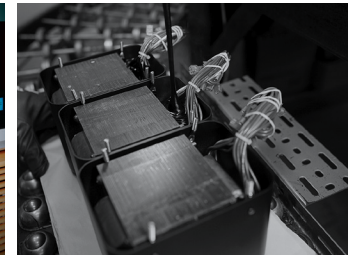


# MDA200 d/a converter

- The MDA200 D/A Converter provides premium digital music capabilities. It is a stand-alone, outboard D/A Converter that can easily be added to home audio systems of various sizes, ages, and configurations.
- Adds digital music listening to an otherwise all analog audio system, or it can be a useful upgrade to replace an older D/A Converter that has become outdated and lacks current features.
- Uses our advanced DA2 Digital Audio Module that supports high resolution digital music playback of up to DSD512 and 24-bit/192kHz. The DA2 is powered by an audiophile-grade Quad Balanced, 8-channel, 32-bit Digital-to-Analog Converter (DAC).
- As new digital audio technologies are developed, it's possible to replace the DA2 with a future module, thus protecting your investment by keeping your MDA200 current for many years.
- The DA2 comes with 7 digital inputs including an HDMI(ARC)<sup>1</sup> input that allows it to be connected to TVs that have an HDMI (ARC) output to bring a new level of audio performance to your TV viewing.
- Default audio output is fixed but can be changed to variable output mode.
- The DA2 has received Roon Tested designation from Roon Labs, whose advanced audio player app creates an interconnected digital library that enhances the listening experience with rich metadata.

1. The HDMI (ARC) input will only play audio from a compatible TV. It will not pass video to or from a TV, or play audio from any non-TV source.



## Premium Digital Performance

# McIntosh®

LEGENDARY PERFORMANCE®

[www.mcintoshlabs.com](http://www.mcintoshlabs.com)

**hi-fi**  
**POWER** HOME &  
PROFESSIONAL  
AUDIOVISUAL

• MAPNH 8 AΘHNA 10433 • THΛ. 210 3845676 – 210 3845272 FAX. 210 3809747 • e-mail: [sales@hifipower.gr](mailto:sales@hifipower.gr) •

# MDA200 d/a converter

## Digital Inputs:

2 Coax  
2 Optical  
1 HDMI (ARC)  
1 USB  
1 MCT

## Analog Outputs:

1 Balanced  
1 Unbalanced

## Total Harmonic Distortion:

0.005%

## Signal to Noise Ratio:

100dB

## Dynamic Range:

100dB

## Frequency Response:

+0, -0.5dB from 20Hz to 20kHz  
+0, -3dB from 5Hz to 60kHz  
(Source dependent)

## Overall Dimensions (W x H x D):

17-1/2" (44.45cm) x 3-7/8" (9.8cm)  
x 15-11/16" (39.95cm)

## Weight:

13.5 lbs (6.1 kg) net,  
28 lbs (12.7 kg) in shipping carton



**For the Consumer's Protection:** In order to ensure the highest level of customer satisfaction, new McIntosh products may only be purchased from an Authorized McIntosh Dealer; and, with certain limited exceptions may only be purchased over-the-counter or delivered and installed by the Authorized McIntosh Dealer. McIntosh does not warrant, in any way, products that are purchased from anyone who is not an Authorized McIntosh Dealer, or that have had their serial numbers altered or defaced.

## Companion Products

The MC611, MC462 or MC312 Power Amplifiers, C2700 or C53 Preamplifiers, XRT1.1K or XR100 Floorstanding Speakers, XR50 Bookshelf Speakers, or a variety of vintage McIntosh components are logical companions for the MDA200 D/A Converter. Your Authorized Dealer can provide additional information on other McIntosh products.

To learn more, please call us at 1.800.538.6576.

# McIntosh®

LEGENDARY PERFORMANCE®