



DALI RUBICON

Bringing you closer
to the real thing



IN ADMIRATION OF MUSIC

DALI RUBICON SERIES

Innovation in audio

Setting a new benchmark in affordable audiophile-quality sound reproduction, the new **DALI RUBICON** range of loudspeakers is the perfect union of striking design and sound engineering expertise – two strands that run deep in both **DALI's** and Denmark's **DNA**. The result is a musical experience beyond expectation, reproduction as close to the artist's original intention as possible, and an overall aural experience that will elate.

True music-lovers want their listening experience to come to life every time, as does **DALI**, which is why we have worked and

experimented with both known and new technologies and techniques to produce a loudspeaker that can transport listeners back to the venue or studio at the moment their music of choice were originally recorded.

An evolution of our award-winning EPICON series, this new family of loudspeakers is composed of the **RUBICON 2** stand speaker, the **RUBICON 5**, **RUBICON 6** and **RUBICON 8** floor standing speakers, as well as a dedicated centre speaker the **RUBICON VOKAL** and the **RUBICON LCR** wall-mount hybrid – all sonically superior whether in or outside of the sweetspot.

The pinnacle of **DALI's** 30+ years of audio innovation and passion, the new **RUBICON** range delivers sound like you've never experienced it before...



“We believe that with **BETTER
SOUND** you get **A BETTER LIFE**”



Lars Worre
CEO



DALI Heritage & Craftmanship

Way back in 1898 a Danish inventor by the name of **Valdemar Poulsen** created the first ever device capable of recording sound magnetically. His 'wire recorder' paved the way for sound recording as we know it today and created the need for someone to hurry up and invent the loudspeaker.

On to Christmas Eve of 1915, when another Danish inventor, **Peter L. Jensen**, demonstrated the world's first loudspeaker to 75,000 people outside of San Francisco's City Hall.

The resulting first public broadcast of opera prompted an eruption of cheering from the amazed crowd and put Jensen firmly in the history books. Now somebody just needed to refine it.

So, in 1983, the **Danish Audiophile Loudspeaker Industry** (or **DALI**) was formed by another great Dane in the annals of audio, Peter Lyngdorf, in a bid to answer the Hi-Fi community's demand for higher quality audio.

Four years later and the **DALI 40** and **DALI SE** were unveiled and that demand was more than met.

With three decades' worth of experience innovating in audio reproduction, today **DALI** is as fresh and forward thinking as ever. To us, the idea of standing still is as abhorrent as standing waves, which is why every new product we develop contains the creative edge that has helped **DALI** climb to the top of the loudspeaker tree.

The creation of a **DALI** loudspeaker is based on a wide range of technical parameters, while never losing sight of the ultimate goal: To design loudspeakers capable of **enhancing your music and film experience** in your own living space.

We are driven by a **raw passion for music** and its **honest reproduction** in the domestic environment. The development and refinement of new technologies to increase the realism of the home entertainment experience is our quest as we create what we believe to be **the best loudspeakers in the world**.

DALI loudspeakers are designed in accordance with our fundamental acoustic and electro-acoustic principles, which together **bring you even closer** to the **full impact** of a **live music experience**.





DALI RUBICON 2



Small but perfectly formed, the **RUBICON 2** stand speaker may be the baby of the bunch, but delivering richly defined detail and big bass response, its sound belies its size. The perfect blend between compact size and cabinet inner-volume, we believe we have created the ideal working environment to eke the absolute best out of its combination of ultra-light soft dome tweeter, 6-5-inch wood-fibre low-loss driver and gold-plated terminals. Don't let its small footprint fool you; the **RUBICON 2** is a performance powerhouse.

RUBICON and the SMC

All variants in the series feature the **DALI SMC magnet system** which reduces distortion as never heard before. Part of the “secret” is the individually coated magnetic granules that make it possible to mould a strong magnet that’s not electrically conductive.

Available in four finishes – High-Gloss White, High-Gloss Black, Rosso and Walnut – the **RUBICON 2** comes complete with rubber feet to hold it firmly in position and, to help keep it at its aesthetic as well as acoustic best.

“We had to do it **OURSELVES**
– it’s been a
LEARNING EXPERIENCE
and it’s been **FUN**”



Kim Kristiansen
Director of Innovation





DALI RUBICON 5

Producing superior sound at a size that's just right for the averagely proportioned living space, the **RUBICON 5** is the first of the floor-standing speakers within the family. Combining that bigger internal capacity with our unique ribbon/soft dome hybrid tweeter module, the **RUBICON 5** extends and widens higher frequencies to deliver a flawless soundstage of impeccably crisp detail and perfectly precise bass response to bring your music to life.

RUBICON and the Hybrid Tweeter module

DALI's trademark hybrid tweeter module, equipped on **RUBICON 5**, **6**, **8** and **LCR**, combines the dome tweeter with the ribbon tweeter for an amazing rendering of the high frequencies, and a dispersion of high-frequency sound that outperforms all other tweeter technologies.


With a case made of solid MDF, the **RUBICON 5** is available in High-Gloss White, High-Gloss Black, Rosso and Walnut finishes and comes complete with both spike set and rubber feet, along with a polishing cloth to keep it looking as stunning as it sounds.

**“RUBICON is the BEGINNING
of the HIGH-END, but
you get a lot MORE THAN
JUST THE BEGINNING”**



Michael Pedersen
Sales Manager





“**HIGH-END** is simply a **LEVEL OF HI-FI** where the record producer hears his own recording and **REALISES THAT IT IS BETTER** than he thought, and that’s what we want to do with the **RUBICON**”



Lars Worre
CEO

DALI RUBICON 6

Delivering a double punch and even more precision-honed power, the **RUBICON 6** comes packing dual 6.5-inch wood-fibre woofers, each sporting its own bass port, gold-plated bi-wiring terminals and our innovative ribbon/soft dome hybrid tweeter module, the two woofers work together to move much more air, delivering more powerful bass and pumping out audio excellence that fills the room.

RUBICON and the Cabinet construction

In every cabinet the mid-range and bass drivers are separated into their own chambers. This enables us to individually tune every driver to its specific frequency range to maximise the woofer output. Furthermore, every woofer has its own bass reflex port placed directly behind the woofer to minimise turbulence and optimise the timing between the woofer and the bass port. Comprehensive internal bracing is applied to eliminate cabinet resonance and colouration of the sound.

RUBICON 6

is available in four finishes – High-Gloss White, High-Gloss Black, Rosso and Walnut – and features both spike set and rubber feet options, along with a polishing cloth to ensure that whichever finish you fall for always looks pristine.





DALI RUBICON 8

RUBICON and Wood Fibre Cones

Utilising the unique soft magnetic compound (SMC) magnet motor system that **DALI** pioneered for the **EPICON** series, the **RUBICON's** wood-fibre cones deliver a high-end audio quality that's staggeringly clear, astoundingly open and affected by very little unwanted distortion or colouration.

Upping the audio ante to the extreme, the **RUBICON 8** is quite simply stunning in terms of the epic soundstage it presents. The trio of woofers work by kicking in at different frequencies, making the **RUBICON 8** the pinnacle of your entry into the world of high-end audio at a mid-range price.

Delivering a totally transparent image with a richness of detail that recreates the passion of a live performance, the wider sound dispersion afforded by our hybrid tweeter helps the **RUBICON 8** fill even the most sizeable of spaces with the purest audio your ears will ever witness.

Standing over a metre tall, the elegantly styled **RUBICON 8** is constructed from solid MDF and is available in four striking finishes: High-Gloss White, High-Gloss Black, Rosso and Walnut. As with its floor standing siblings, it also comes complete with both spike set and rubber feet plus a polishing cloth to keep your new pride and joy fingerprint free.



“We created a **PERFECT ENVIRONMENT** for the **DRIVERS**”



Mads Møller
Design Manager

DALI RUBICON LCR

We at DALI believe audio should always be about innovation, which is why we are particularly proud to present our **RUBICON LCR** – a wall mount speaker without peer.

Delivering a wonderfully wide dynamic range and imaging so real you can almost reach out and touch the musicians playing, the **RUBICON LCR** is in a class of its own and weighs in at a price as astounding as the sound it emits.



Featuring the same hybrid tweeter and wood-fibre, low-loss driver as our floor standing **RUBICON** range, the **LCR** also boasts an ingenious bass port configuration built into the back panel that uses the wall it is mounted on to extend its acoustic properties and deliver such unrivalled bass response that there's no need to add a subwoofer to your setup.



RUBICON and Low Loss

The wood fibre cone terminates in a soft low-loss rubber surround that has been designed from the ground up and is bespoke for the **RUBICON** driver. The surround ensures that the cone moves easily and without loss of energy. Combined with a lightweight but powerful voice coil, the **RUBICON** woofer is able to render the subtlest details even at low volume.

The DALI RUBICON VOKAL

is the ultimate centre speaker crafted with the perfect balance between performance and size. Equipped with two 6½" wood fibre woofers and DALI's acknowledged hybrid tweeter module, this centre piece has plenty of punch and power to match even the largest speakers in the **RUBICON** series.

“It’s **DEFINITELY** a
TYPICAL DALI SOUND”



Henrik Løvig
Project Manager



DALI RUBICON VOKAL

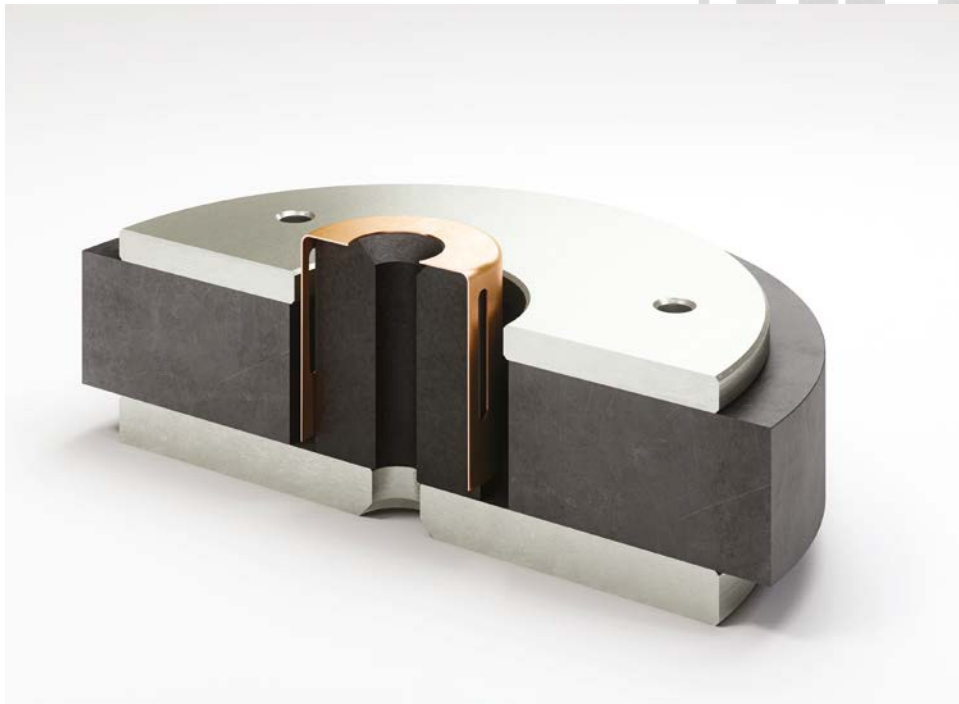
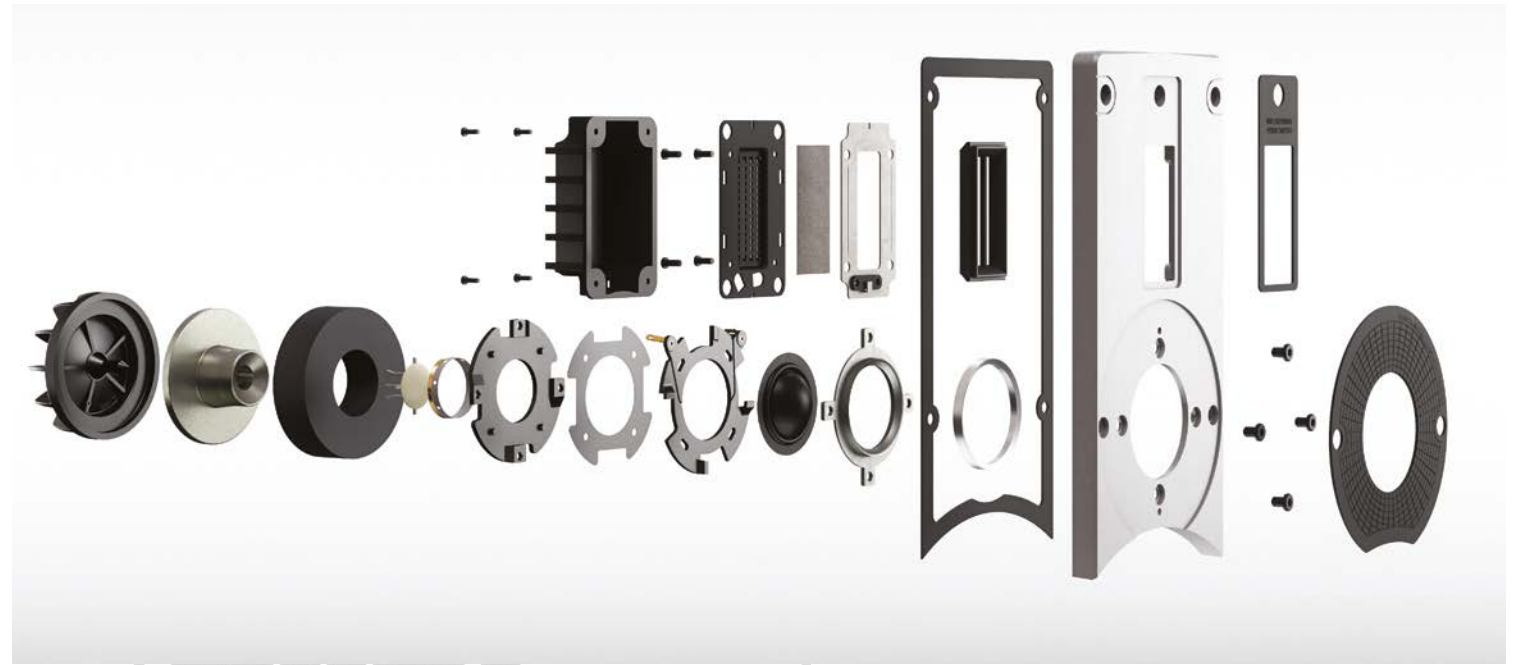
In the **RUBICON VOKAL**, DALI makes use of both the soft dome tweeter configuration alone, and the hybrid tweeter configuration an amazing rendering of the high frequencies. The voice coil used in the **RUBICON VOKAL** is designed to be very light and agile in order to achieve a broader bandwidth. This lighter voice coil is placed inside a powerful ferrite magnet that keeps a tight control of its movements. The cabinet size helps the **RUBICON VOKAL** reproduce even the lowest bass frequencies from the gripping action on the screen or stunning musical performances.



The Technology

At **DALI** we like to lead the way when it comes to invention in audio, which is why every new loudspeaker we produce is a fusion of both known and new technology. We build on that which has gone before, taking the best elements of the existing, making them even better and mixing them with entirely new ideas that we've pioneered; and the **RUBICON** range does not disappoint.

Each model in the **RUBICON** range features woofers with the 6.5-inch wood-fibre cones, alongside our unique **SMC** (soft magnetic compound) magnet motor system and a reworked version of our hybrid tweeter module. All of these technologies work together, along with individual bass ports for each woofer, to produce audio exactly as the recording artist originally imagined it.





DALI RUBICON cabinet

As easy on the eye as they are on the ear, the design of the **RUBICON** cabinet pays tribute to our sleek and sexy **DALI MENTOR MENUET** series. Constructed from solid MDF, the **RUBICON** cabinet provides a sturdy base for the drivers which are screw-mounted directly into the 25mm thick front baffle.

Styled with clean lines to keep a contemporary edge, the whole range comes in a choice of High-Gloss White, High-Gloss Black, Rosso or Walnut.



DALI RUBICON tweeter module

Our trademark hybrid tweeter module sees the dome tweeter cunningly combined with the ribbon tweeter for an amazing rendering of the high frequencies and a dispersion of high-frequency sounds that outperforms all other tweeter technologies.

In **RUBICON** we've used an optimised version of the ribbon/29mm soft dome hybrid tweeter module which results in a tweeter which can reach further into the higher frequencies than standalone soft domes and an audio output that's incredibly rich in detail.



DALI RUBICON SMC driver

The use of **SMC** (Soft Magnetic Compound) in our **RUBICON** range has many advantages, but the most gratifying result is a huge reduction of distortion from the mechanical loss in the magnet motor.

SMC'S ability to deliver a high magnetic conductivity and a very low electrical conductivity produces all the desired qualities of a high-quality speaker magnet without any of the traditional downsides — and the result is a significant lowering of the colouration of the reproduced sound.

For more in-depth information about the **RUBICON** technologies, please check out the **RUBICON** whitepaper which can be down-loaded from our website.

www.dali-speakers.com

“The use of **SMC** in the magnet system has a **MAJOR INFLUENCE** on the **SOUND**”



Kim Kristiansen
Director of Innovation

DALI RUBICON TECHNICAL SPECIFICATIONS

	RUBICON 2	RUBICON 5	RUBICON 6	RUBICON 8	RUBICON LCR	RUBICON VOKAL
Frequency Range [+/- 3] dB [Hz]	50 - 26,000	45 - 34,000	38 - 34,000	38 - 34,000	59 - 34,000	49 - 34,000
Sensitivity [2.83V/1m] [dB]	87	86	88.5	90.5	89	89,5
Nominal Impedance [ohms]	4	4	4	4	4	4
Maximum SPL [dB]	107	107	110	112	109	111
Recommended Amp. Power [Watt]	40 - 150	60 - 150	40 - 200	40 - 250	20 - 150	40 - 200
Crossover Frequency [Hz]	3,100	2,900/14,000	800/2,600/14,000	500/800/2,500/14,000	3,100/14,000	2,700/14,000
Crossover Principle	2-way	2 + 12-way	2 1/2 + 1/2-way	2 1/2 + 1/2 + 12-way	2 + 1/2-way	2 + 1/2-way
High Frequency Driver	1 x 29 mm soft dome	1 x 29 mm soft dome 1 x 17 x 45 mm ribbon	1 x 29 mm soft dome 1 x 17 x 45 mm ribbon	1 x 29 mm soft dome 1 x 17 x 45 mm ribbon	1 x 29 mm softdome 1 x 17 x 45 mm ribbon	1 x 29 mm softdome 1 x 17 x 45 mm ribbon
Low Frequency Driver(s)	1 x 6 1/2"	1 x 6 1/2"	2 x 6 1/2"	3 x 6 1/2"	1 x 6 1/2"	2 x 6 1/2"
Enclosure Type	Bass reflex	Bass reflex	Bass reflex	Bass reflex	Bass reflex	Bass reflex
Bass Reflex Tuning Frequency [Hz]	42.5	39	33	33	49	36.5
Connection Input(s)	Single	Bi-wire / Bi-Amp	Bi-wire / Bi-Amp	Bi-wire / Bi-Amp	Single	Bi-wire / Bi-Amp
Recommended Placement	Stand/Shelf	Floor	Floor	Floor	On wall/Shelf/Table/ Below TV-screen	Shelf/Table/ Below TV screen/Stand
Recommended Distance from rear wall to speaker's rear side [cm]	20 – 120	20 – 150	20 – 180	25 – 180	0 – 30	5 – 100
Dimensions (H x W x D) [mm]	350 x 195 x 335	890 x 195 x 338	990 x 200 x 380	1100 x 220 x 444	465 x 278 x 142	197 x 581 x 400
Dimensions (H x W x D) [inches]	13.9 x 7.7 x 13.3	35.2 x 7.7 x 13.4	39.1 x 7.9 x 15.0	43.5 x 8.7 x 17.6	18.4 x 11.0 x 5.6	7.8 x 22.9 x 15.8
Weight [kg/lb]	8.0 / 17.7	15.7 / 34.7	20.2 / 44.6	27.3 / 60.3	8.0 / 17.9	13.8 / 30.5
Accessories	Rubber feet, polishing cloth, manual	Spike set, rubber feet, polishing cloth, manual	Spike set, rubber feet, polishing cloth, manual	Spike set, rubber feet, polishing cloth, manual	Rubber feet, polishing cloth, manual	Rubber feet, polishing cloth, manual

All technical specifications are subject to change without notice.





“We’ve created a **CLEAN**
and **ELEGANT** look”



Mads Møller
Design Manager



IN ADMIRATION OF MUSIC



www.dali-speakers.com

MADE IN 
DENMARK