



Thesis Audio

Amaze yourself!

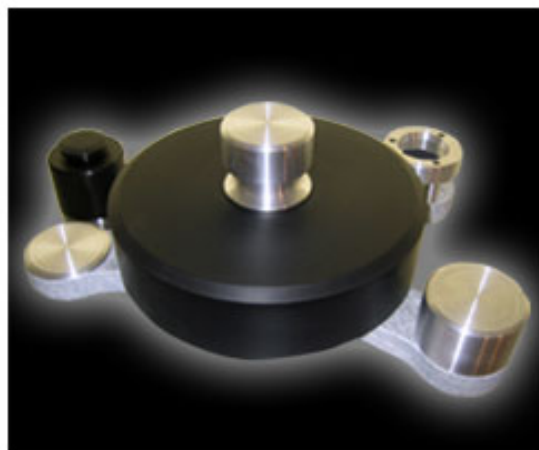
## Lysithea

### Rock, Blues, Jazz, Classical.

Musical events that have accompanied Lysithea from the day of its birth.

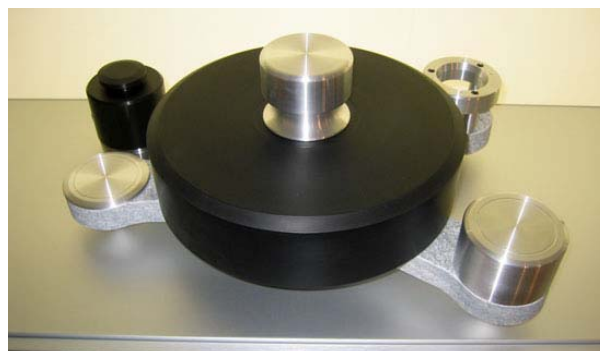
Today, it's only natural that Lysithea is equally at home with all of them, and can express their finest shades of meaning.

A **faithful companion** that will give life-long pleasure.



### Features:

- Thick non-resonating stone plinth supported at three points.
- Ultra-thick non-resonating synthetic platter with concave surface profile to improve contact with the record.
- Aluminum alloy support available with cut-outs for any type of tonearm.
- Separate high-torque motor.
- Aluminum alloy clamp.
- Weight: 20 Kg. (22 packed)
- Dimension (wxhxd): 500x221x350  
(600x400x400 packed)
- Motor: 15VDC
- Power consumption: 10W (0.5A)





Thesis Audio

Amaze yourself!

## Accessories

### NON-RESONATING STONE BASE

Designed for **Thesis Audio Turntables**, but can also be used with other makes of turntable, CD players, amplifiers and pre-phono units to increase mass and isolate equipment from vibration in the listening environment. Provided with **three conical** leveling feet.

*Other sizes available by special order.*

**Material:** Non-resonating stone

**Dimensions:** 50x35 cm

**Weight:** approx. 10 Kg



### CLAMP

Supplied as standard equipment with all Thesis Audio Turntables. Can also be used with all other makes of turntable to secure the record solidly to the platter, eliminating vinyl resonance and preventing slippage.

**Material:** Anticorodal aluminum alloy

**Dimensions:** diam. 88 mm / h 70 mm

**Weight:** approx. 1 Kg circa

