

All-new cabinet design

Constructed using laminated layers of MDF to form a curved and braced super rigid 18-21mm cabinet on the rear with a 36mm thick baffle precision machined to create a unique curved front profile.

The cabinets are then embellished with etched inlays to highlight the craftsmanship, before 16 layers of lacquer are added on top.



Piano Ebony



Pure Satin White

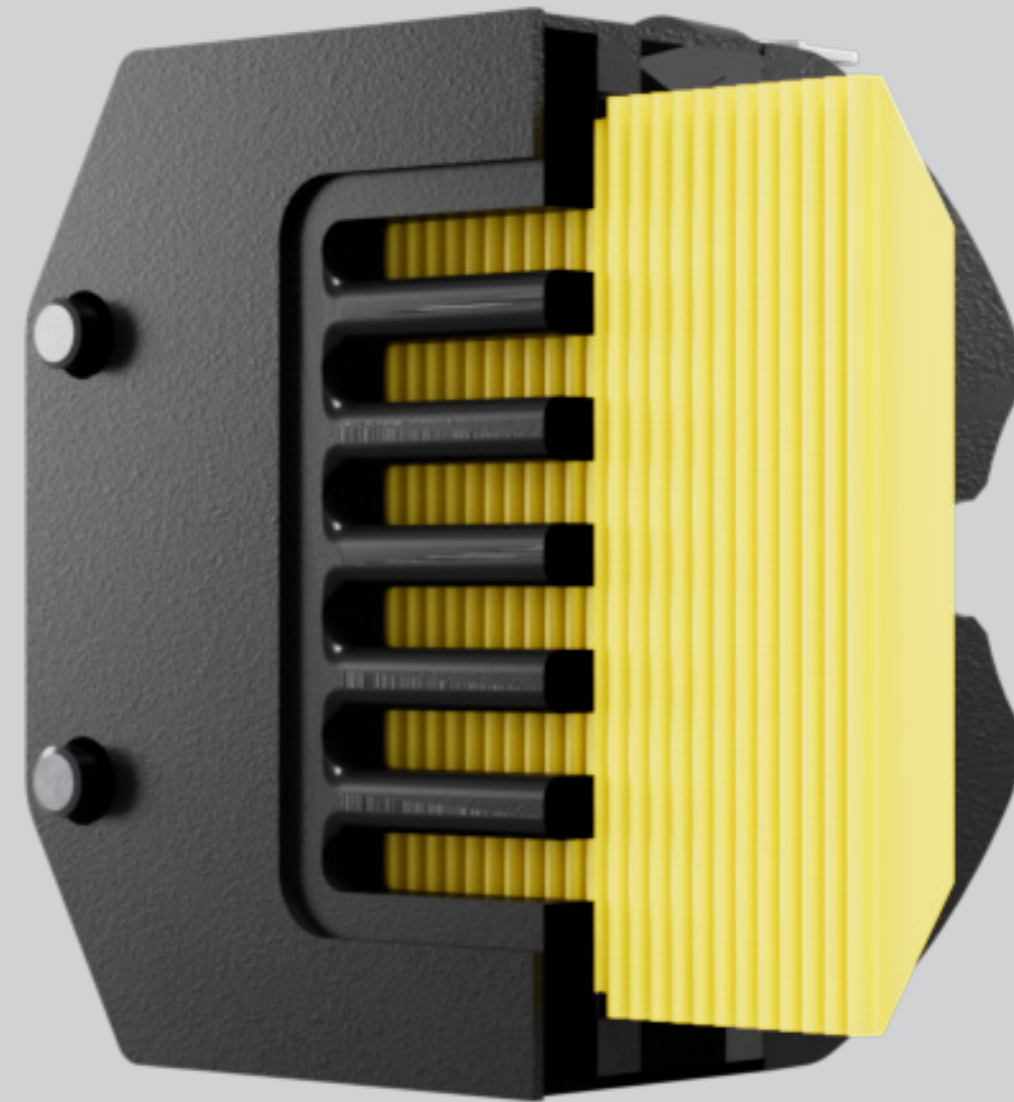
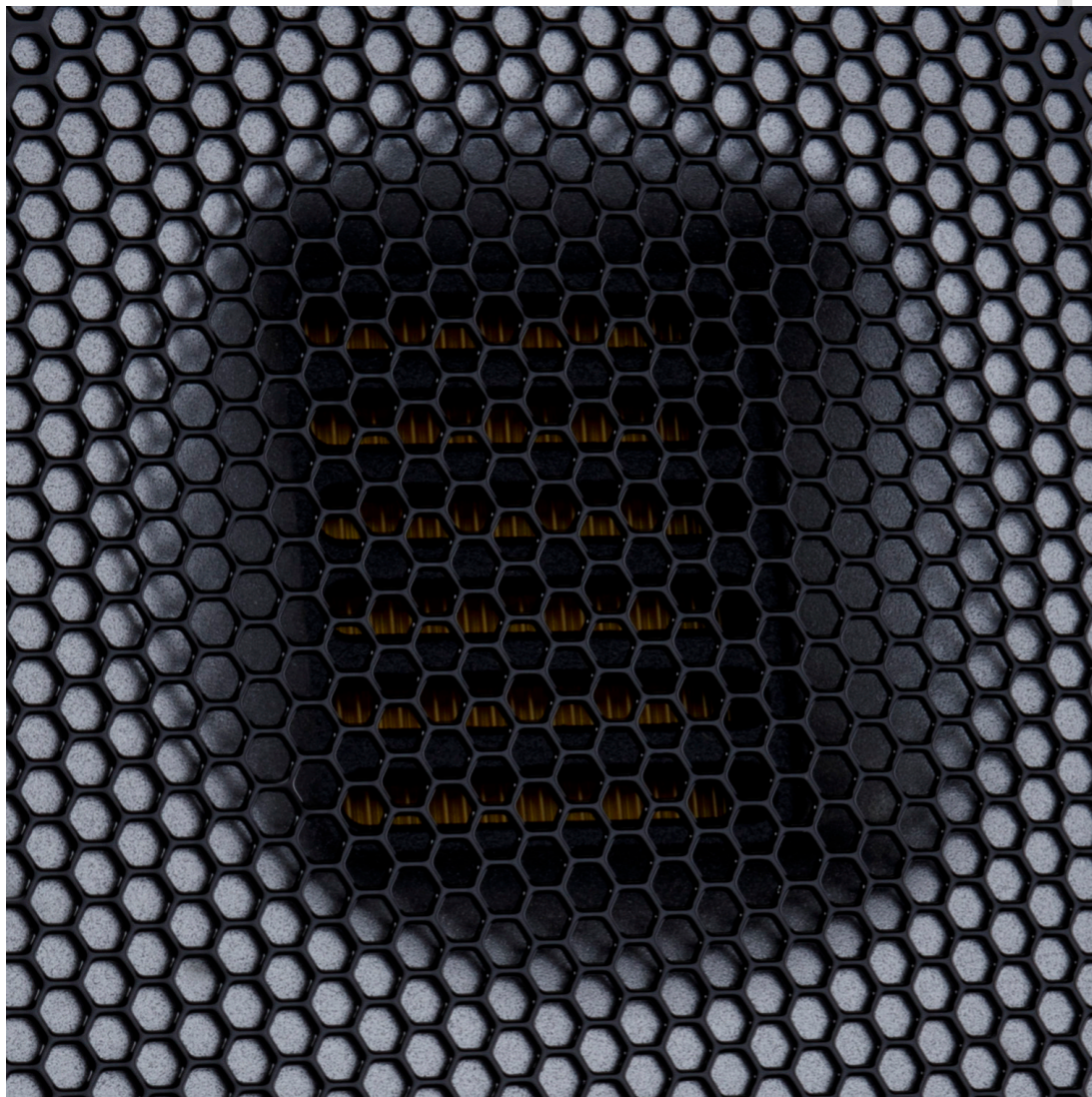
Piano Black

Pinpoint accuracy for lifelike sound

New MPD III high frequency transducer

The improvements help to reduce distortion and flatten the frequency response leading to a clear and consistent sound across all your music.

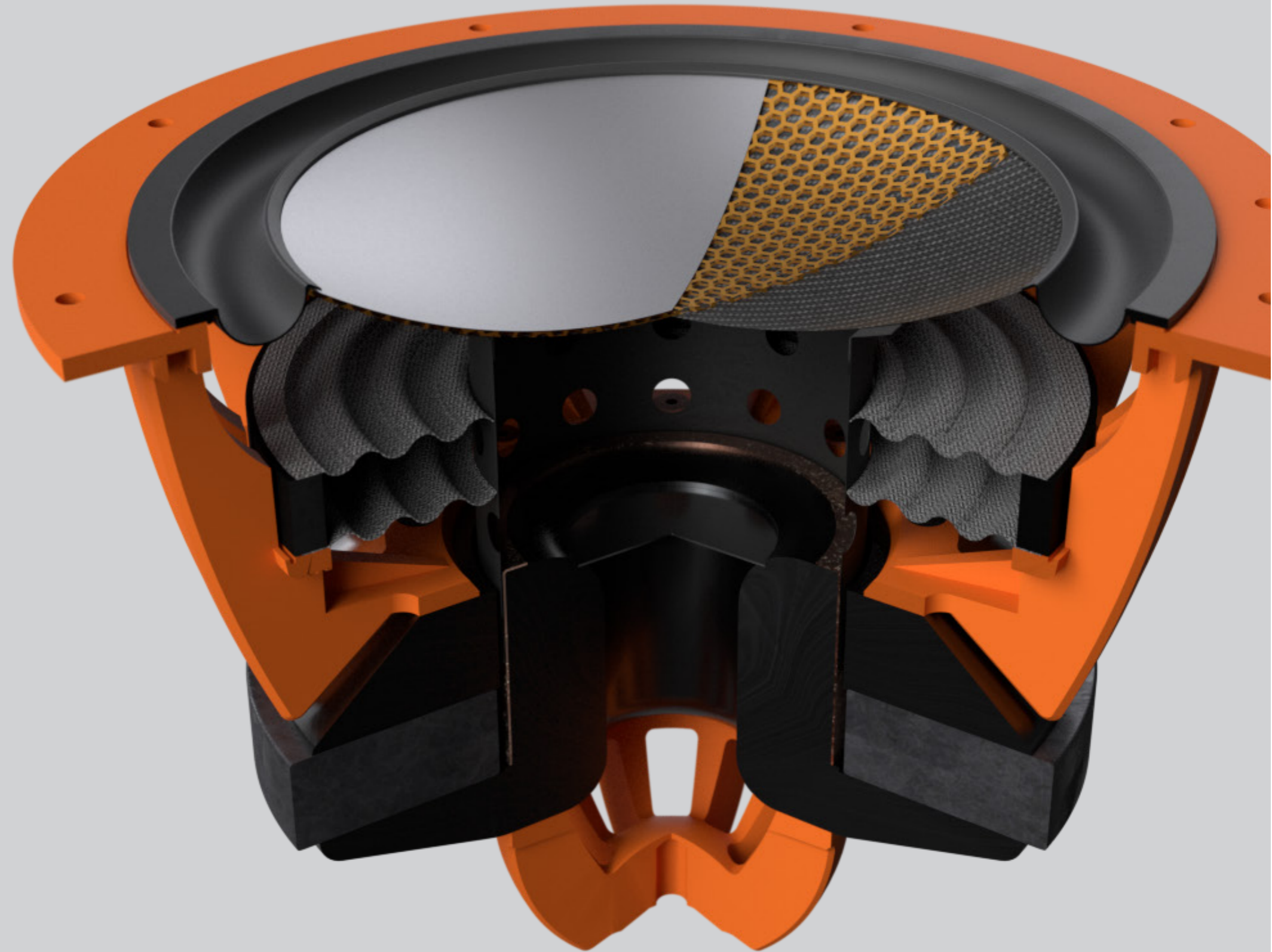
- Developed for our ground-breaking Hyphn loudspeaker
- Micro Pleated Diaphragm (MPD) extends tweeter passband to >60 kHz (compared to >40 kHz for a typical AMT)
- Square radiating area ensures equal directivity in horizontal and vertical planes, resulting in an improved soundstage
- Optimised rear volume to ensure minimal ripple in audible frequency range, with gentle rise on-axis to deliver exceptional detail
- Optimised waveguide to give controlled directivity and radiation impedance matching, further improving soundstage and maximising sensitivity



Precision perfect

New Rigid Diaphragm Technology III (RDT II)

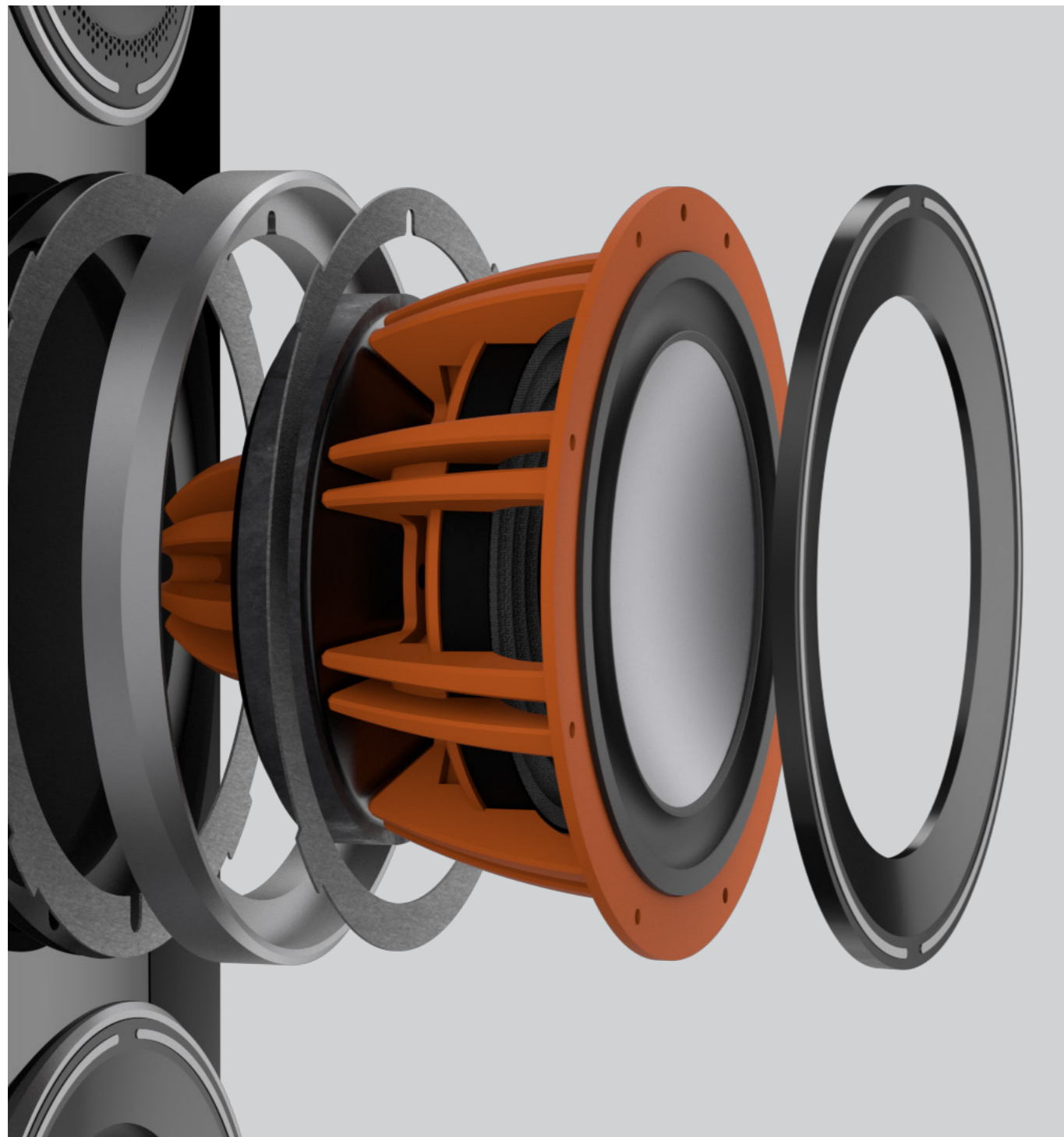
- The Rigid Diaphragm Technology III (RDT III) cone has three new optimisations over its predecessor
- New rear layer featuring two uniform layers of carbon fibre skin to reduce cone breakup
- Optimised cone edge treatment to extend passband of drivers
- Optimised rubber surround to reduce cone breakup
- Combined the above improvements significantly increase the useable bandwidth enabling improvements to the crossover and final response of the speaker. This is especially important for the Platinum



Clever design is more than skin deep

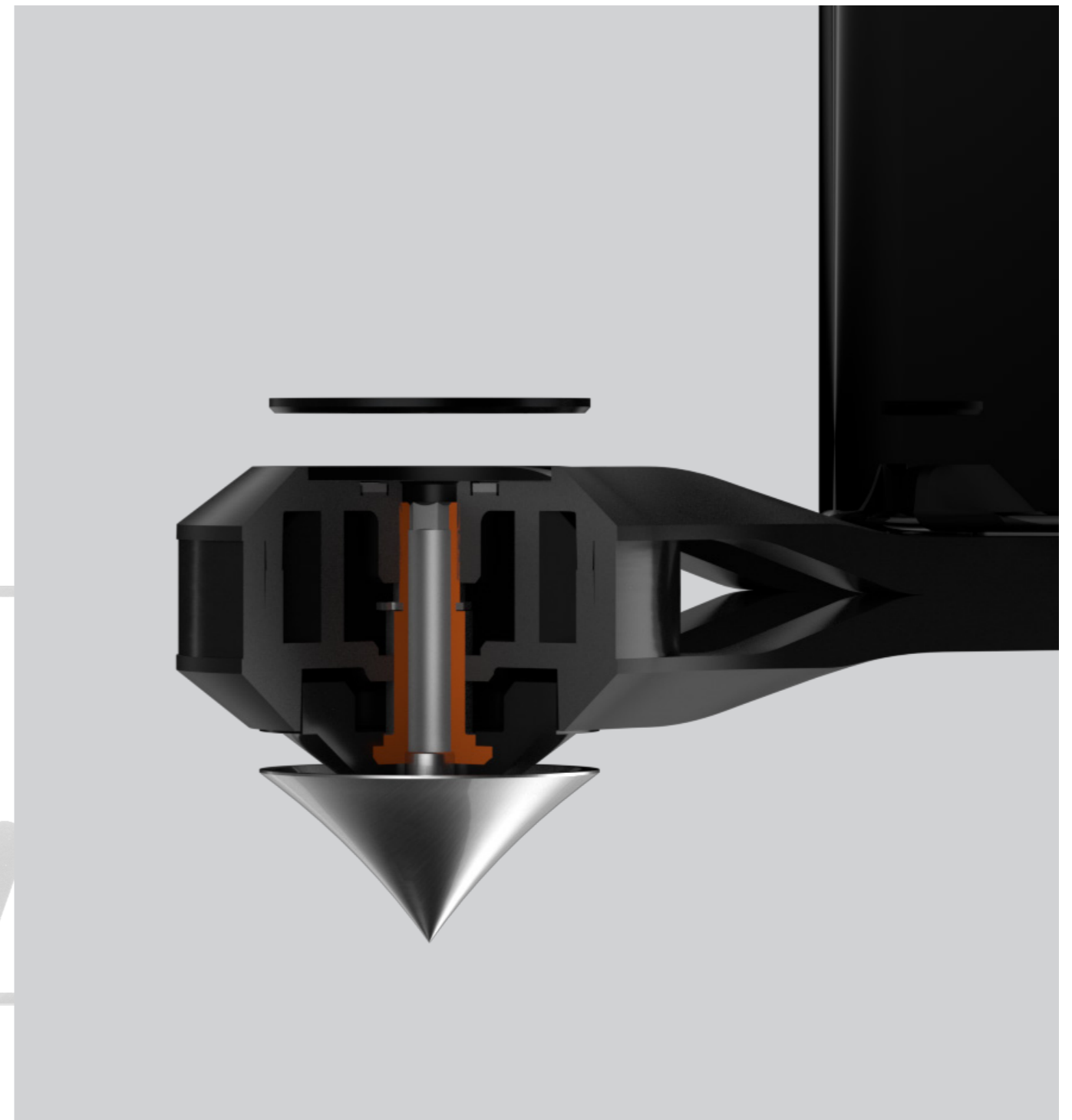
Platinum series has always represented Monitor Audio's engineering and design prowess and the 3rd generation is no exception. Our UK based design team have worked closely with the acoustic team to deliver an aesthetic which celebrates the performance components without overpowering its surroundings.





Aluminium Driver Frames

The drivers on the Platinum Series 3G are held in place with individually cast aluminium holders, creating two layers of isolation between the driver chassis and the cabinet.



New Outrigger Feet

The new Platinum outrigger foot assembly have been precision engineered to form a solid platform for the floor standing speakers while forming a more elegant aesthetic to a cumbersome plinth.



Platinum 100 3G

The Platinum 100 3G is a compact 2-way speaker that features a MPD III transducer and 6" RDT III mid-bass driver cone. It offers an utterly compelling listening experience from a relatively small cabinet.



Platinum 200 3G

The Platinum 200 3G is a slim and compact three-way floorstander, designed to deliver a rich, dynamic high-end performance with tight, controlled bass. It boasts a MPD III transducer, a 4" RDT III midrange driver and twin 6" RDT III bass drivers.

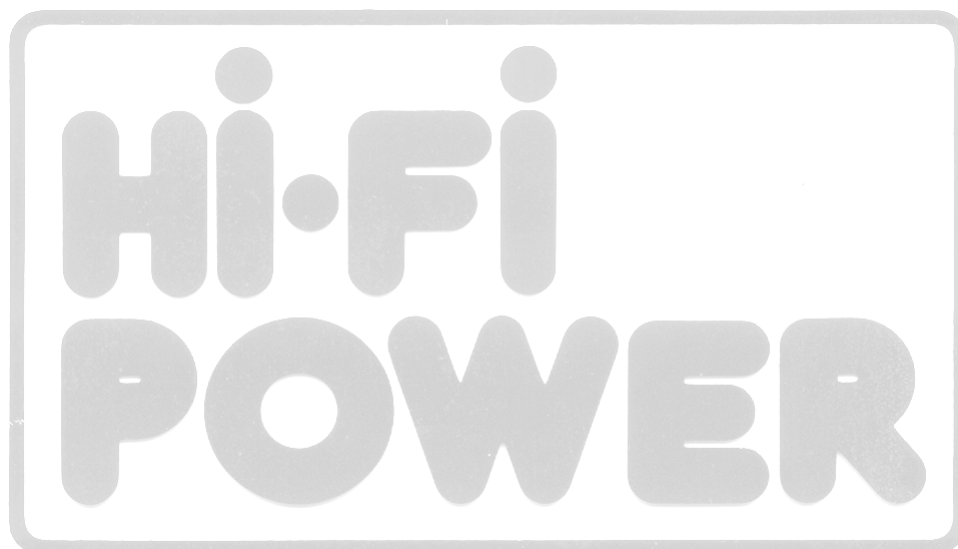
Specifications



Model	Platinum 100 3G	Platinum 200 3G	Platinum 300 3G	Platinum C250 3G
System Format	2-way	3-way	3-way	3-way
Frequency response (-6dB) Free-Field	37 Hz - >60 kHz	32 Hz - >60 kHz	25 Hz - >60 kHz	48 Hz - >60 kHz
Frequency response (-6dB) In room	28 Hz - >60 kHz	23 Hz - >60 kHz	17 Hz - >60 kHz	30 Hz - >60 kHz
Sensitivity (2.83v @ 1m)	85 dB	88 dB	88 dB	88 dB
Nominal impedance	4 Ohms	4 Ohms	4 Ohms	4 Ohms
Minimum Impedance	4.0 Ohms @ 180 Hz	4.0 Ohms @ 2.5 kHz	4.0 Ohms @ 3.75 kHz	4.0 Ohms @ 150 Hz
Continuous Power Handling (RMS into 4 Ohms, Pink Noise with 6dB Crest Factor)	150 W	300 W	400 W	300 W
Recommended Amplifier Power (RMS into 4 Ohm, Music Signal)	75-300 W	150-600 W	200-800 W	150-600 W
Bass Alignment	HiVe II port system	HiVe II port system	Dual HiVe II port system	Sealed
Crossover Frequency	LF/HF: 2.85 kHz	LF/MF: 825 Hz/MF/HF: 3 kHz	LF/MF: 650 Hz/MF/HF: 3 kHz	LF/MF: 850 Hz/MF/HF: 3.5 kHz
Port Tuning Frequency	44 Hz	38 Hz	32 Hz	N/A
Drive Unit Complement	1 x 6" RDT III bass driver, 1 x MPD III tweeter	2 x 6" RDT III bass driver, 1 x 4" RDT III mid-range driver, 1 x MPD III tweeter	2 x 8" RDT III bass driver, 1 x 4" RDT III mid-range driver, 1 x MPD III tweeter	2 x 6" RDT III bass driver, 1 x 2.5" RDT III mid-range driver, 1 x MPD III tweeter
External Dimensions including Grille and Terminals (H x W x D)	398 x 225 x 325 mm 15 ^{5/8} x 8 ^{13/16} x 12 ^{11/16} "	1023 x 368 x 454 mm 40 ^{3/16} x 14 ^{3/8} x 17 ^{13/16} "	1113 x 430 x 525 mm 43 ^{13/16} x 16 ^{7/8} x 20 ^{5/8} "	225 x 630 x 326 mm 8 ^{13/16} x 24 ^{13/16} x 12 ^{13/16} "
External Dimensions including Outrigger Feet and Spikes (H x W x D)	N/A	1040 x 368 x 454 mm 40 ^{7/8} x 14 ^{3/8} x 17 ^{13/16} "	1129 x 430 x 525 mm 44 ^{3/8} x 16 ^{7/8} x 20 ^{5/8} "	N/A
Weight (Each)	15.2 kg 33 lb 8 oz	35.8 kg 78 lb 14 oz	53.6 kg 118 lb 2 oz	25.4 kg 55 lb 15 oz
Finishes	Piano Ebony, Piano Black, Matte White			

Model	Platinum In-Wall 3G
System Format	3-way
Frequency response (-6dB) Free-Field	41 Hz - >60 kHz
Frequency response (-6dB) In room	27 Hz - >60 kHz
Sensitivity (2.83v @ 1m)	88 dB
Nominal impedance	4 Ohms
Minimum Impedance	4.1 Ohms @ 1.6 kHz
Continuous Power Handling (RMS into 4 Ohms, Pink Noise with 6dB Crest Factor)	300 W
Recommended Amplifier Power (RMS into 4 Ohm, Music Signal)	150-600 W
Bass Alignment	Sealed
Crossover Frequency	LF/MF: 825 Hz/MF/HF: 3 kHz
Port Tuning Frequency	N/A
Drive Unit Complement	2 x 6" RDT III bass driver, 1 x 4" RDT III mid-range driver, 1 x MPD III tweeter
External Dimensions including Grille and Terminals (H x W x D)	1207 x 332 x 105.5 mm 47 ^{9/16} x 13 ^{1/16} x 4 ^{1/8} "
Cut Out Dimensions	1175 x 300 x 97.5mm 46 ^{1/4} x 11 ^{3/8} x 3 ^{13/16} "
Weight (Each)	27.7 kg 61 lb

Learn more about Platinum Series 3G at monitoraudio.com/platinum



Monitor Audio Ltd.
24 Brook Road
Rayleigh, Essex
SS6 7XJ
England
Tel: +44 (0)1268 740580
Email: info@monitoraudio.group

monitoraudio.com

©Monitor Audio Ltd. | VI-2022 - Platinum Series 3G Brochure



HOME &
PROFESSIONAL
AUDIOVISUAL

• MAPNH 8 ΑΘΗΝΑ 10433 • ΤΗΛ. 210 3845676 – 210 3845272 FAX. 210 3809747 • e-mail: sales@hifipower.gr •