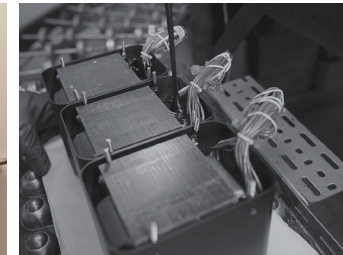


MP1100 phono preamplifier

- The MP1100 Phono Preamplifier is filled to the brim with everything you need to not only play your records, but also get every last musical note and nuance out of them – including some you may have never heard before.
- Fully balanced vacuum tube phono stage. Utilizes four 12AX7A vacuum tubes with 2 tubes per channel. Achieves our most accurate equalization ever. Dual Mono design to help combat noise.
- Three sets of phono inputs. Each can be configured for either Moving Coil or Moving Magnet cartridges.
- Extremely customizable: 5 programmable Profiles (in addition to 4 pre-programmed ones), 8 Capacitance & 7 Resistance settings, 5 Analog Equalization Curves, 2 Analog Noise Filters, Adjustable Gain and a Mono setting.
- Includes a pair of balanced & unbalanced line inputs and fixed outputs plus an optical, coax and USB digital output. It can “rip” records to a computer via USB to produce high quality digital files.
- Polished stainless steel and hairline brushed black Titanium stainless steel chassis with classic McIntosh design cues.



MP1100 shown with MT10. All units sold separately.



A New Level of Vinyl Enjoyment and Exhilaration

McIntosh®

LEGENDARY PERFORMANCE™

www.mcintoshlabs.com

Hi-Fi
POWER HOME &
PROFESSIONAL
AUDIOVISUAL

• MAPNH 8 AΘHNA 10433 • THΛ. 210 3845676 – 210 3845272 FAX. 210 3809747 • e-mail: sales@hifipower.gr •

MP1100 phono preamplifier



Frequency Response:

+/-0.2dB from 20Hz to 20kHz
+0.2, -3dB from 10Hz to 50kHz

Total Harmonic Distortion:

Phono: 0.02%
High Level: 0.005%

Signal to Noise Ratio:

MC: 80dB below 0.5mV input
MM: 84dB below 5mV input
High Level: 118dB below rated output

Inputs:

Phono: 3
(2 sets RCA only, 1 set RCA or XLR)
High Level: 1 balanced, 1 unbalanced

Input Impedance:

Resistance: 25, 50, 100,
200, 400, 1k or 47k Ohms
Capacitance: 50, 100, 150,
200, 250, 300, 350 or 400pF
High Level: Unbalanced: 50k Ohms;
Balanced: 100k Ohms

Outputs:

1 Balanced
1 Unbalanced
1 Coax
1 Optical
1 USB

Maximum Output Voltage:

Balanced: 20 Vrms
Unbalanced: 10 Vrms

Overall Dimensions

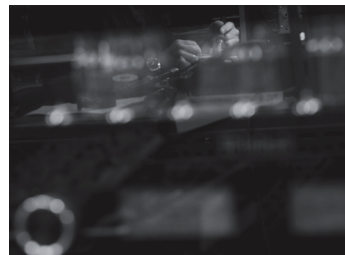
(W x H x D):
17-1/2" (44.5cm) x 6"
(15.2m) x 18"
(45.7cm)

Weight:

26 lbs (11.8 kg) net,
40 lbs (18.2 kg) in
shipping carton

For the Consumer's Protection:

In order to ensure the highest level of customer satisfaction, new McIntosh products may only be purchased from an Authorized McIntosh Dealer; and, with certain limited exceptions may only be purchased over-the-counter or delivered and installed by the Authorized McIntosh Dealer. McIntosh does not warrant, in any way, products that are purchased from anyone who is not an Authorized McIntosh Dealer, or that have had their serial numbers altered or defaced.



Companion Products

The MT10 and MT5 Turntables, C1100 Vacuum Tube Preamplifier, MC275 and MC2301 Vacuum Tube Amplifiers and XR100 Loudspeakers are logical companions for the MP1100 Phono Preamplifier. Your Authorized Dealer can provide additional information on other McIntosh product combinations.

To learn more, please call us at 1.800.538.6576.

McIntosh®

LEGENDARY PERFORMANCE™

www.mcintoshlabs.com