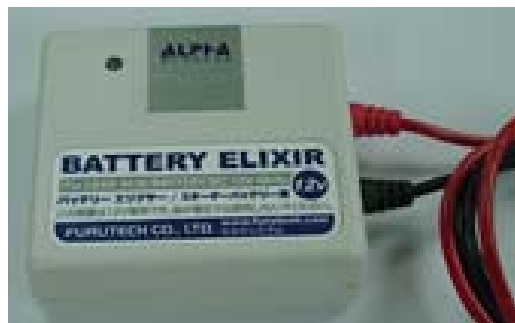


FURUTECH

www.furutech.com

(NEW ITEM) 2006



BATTERY ELIXIR

Only for LEAD-ACID BATTERY use (12V/24V)

BATTERY ELIXIR

To do the High quality lead acid battery and have a long lifetime

※ Why do lead acid batteries prematurely degenerate?

Sulfation forms over the battery electrode plates.

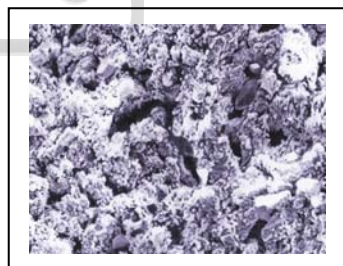
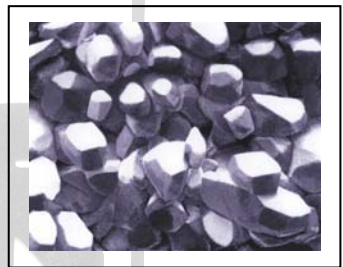
Sulfation is crystallized lead sulfate ($PbSO_4$), a non-conductive material, therefore the electrode plates develop a high resistance and the optimum chemical reaction cannot be achieved.

How can a battery be REVIVED?

New electrode plates are made of pure spongy lead. These plates have a large surface area where the chemical reaction can effectively take place, but as the sulfate builds up on the plate surface that effectiveness is reduced.

The FURUTECH **BATTERY ELIXIR** using the patented "ERUMA system" technology melts down the sulfation that builds up on the electrode surface. During charging "Pb" returns to the electrode surface and "So₄"

(sulfation) is melted down into the battery liquid, thus reviving batteries and extending their life.

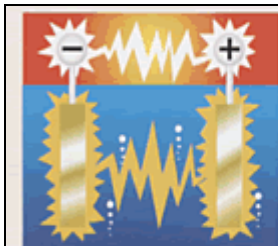


New Battery

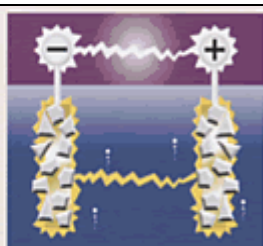
Crystallized Sulfations

Desulfation

Revitalized new battery



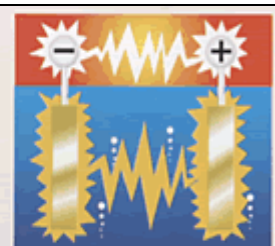
極板には付着物がなく
+極と一極の間に電気
が活発に流れています。



極板のまわりに硫酸鉛が
発生し(サルフェーション)、
電気が流れにくくなります。



硫酸鉛を表面から少し
づつ微粒子状に分解し
ます。



バッテリー内の電流の
流れが新品時のように
よくなります。

