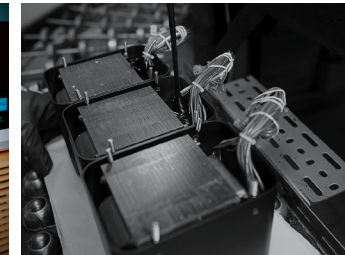


C8 tube preamplifier

- The C8 Vacuum Tube Preamplifier has an open chassis industrial design similar to our popular MC275 Vacuum Tube Amplifier, MC830 Solid State Amplifier, and MA252 and MA352 Integrated Amplifiers.
- Powered by four 12AX7a vacuum tubes housed inside stylish protective cages.
- Comes with 1 balanced and 2 unbalanced analog inputs, plus 1 Moving Coil and 1 Moving Magnet phono inputs with adjustable loading, 1 balanced and 2 unbalanced outputs.
- Does not come equipped with any digital inputs, but it is digital-audio-ready as our DA2 Digital Audio Module can be installed in it as an optional dealer installed upgrade.
- The DA2 has 7 digital inputs: 2 coax, 2 optical, 1 USB, 1 MCT (for use with our line of SACD/CD Transports), and 1 audio-only HDMI Audio Return Channel (ARC)1 connection. Supports up to DSD512.
- Bass and treble tone controls help fine tune your music to your personal preferences.
- Comes with our High Drive headphone amplifier that has plenty of power and flexibility to drive a wide range of headphones.
- Power Control can automatically turn other connected McIntosh components on and off. Data Ports can send remote control commands to connected source components.



Compact Control

McIntosh[®]

LEGENDARY PERFORMANCE[®]

www.mcintoshlabs.com

**Hi-Fi
POWER**

HOME &
PROFESSIONAL
AUDIOVISUAL

• MAPNH 8 AΘHNA 10433 • THΛ. 210 3845676 – 210 3845272 FAX. 210 3809747 • e-mail: sales@hifipower.gr •

C8 tube preamplifier

Frequency Response:

+0, -0.5dB from 20Hz to 20kHz
+0, -3dB from 15Hz to 100kHz

Total Harmonic Distortion:

0.08% Maximum from 20Hz to 20kHz

Inputs:

2 Unbalanced
1 Balanced
1 Moving Coil (adjustable)
1 Moving Magnet (adjustable)

Outputs:

2 Unbalanced
1 Balanced

Maximum Output Voltage:

Balanced: 16 Vrms
Unbalanced: 8 Vrms

Tone Controls:

Bass and Treble (adjustable)

Overall Dimensions (W x H x D):

12-9/32" (31.2cm) x 7-5/8" (19.4cm)
x 16-1/4" (41.3cm)

Weight:

18 lbs (8.2 kg) net,
25 lbs (11.3 kg) in shipping carton

For the Consumer's Protection:

In order to ensure the highest level of customer satisfaction, new McIntosh products may only be purchased from an Authorized McIntosh Dealer; and, with certain limited exceptions may only be purchased over-the-counter or delivered and installed by the Authorized McIntosh Dealer. McIntosh does not warrant, in any way, products that are purchased from anyone who is not an Authorized McIntosh Dealer, or that have had their serial numbers altered or defaced.



Companion Products

The MC830 Power Amplifier, MT2 Precision Turntable, MCD350 SACD/CD Player, MS500 Music Streamer and XR100 Loudspeakers are logical companions for the C8 Vacuum Tube Preamplifier. Your Authorized Dealer can provide additional information on other McIntosh product combinations.

To learn more, please call us at 1.800.538.6576.